

Full HD 1920x1200 DVI USB Matrix Extender over IP

IP-controlled matrix switching 1920x1200 DVI USB extension

Model No. : **DSE-1025**

DSE-1025 is the state-of-the-art Over-IP DVI USB Matrix Extender which can simultaneously support the extensions of DVI 1920x1200, USB2.0 and audio line-in/out via a single Cat 5 cable in all LAN topologies.

With the advanced IP-based AV/PC extension technology, DSE-1025 features the visually lossless image quality DVI-over-IP extension, hardwired USB-over-IP extension, 4-port USB hub, IP-controlled connection management, low video stream latency and flexible function customization.

DSE-1025 is capable of the varied connection topologies on the LAN by using Ethernet Gigabit Switch, including (1) 1x1 (extending up to 100m) (2) daisy chain (3) broadcasting (4) matrix (5) any-size video wall. Besides, DSE-1025 has the built-in Web UI supporting the easy, convenient and friendly SW control for connection and video wall management.

Features

- Supported DVI resolution up to 1920 x 1200 (60fps)
- Daisy chain extension over IP
- Matrix switching extension over IP
- Any size video wall matrix extension over IP
- Image snapshot of the extended video
- Web UI for connection and video wall management
- Dual link I/F (CAT5 & Fiber) with auto hot-swap
- Point-to-point extension distance up to 100 meters (330 feet) via CAT5 cable; up to 30 kilometers via Fiber Optic cable
- All 3D image format supported
- Compatible with USB 2.0 data transmitted rates up to 480 Mbps and backward with USB 1.1 (Transmitter : 1 port USB-B type Host Interface / Receiver : 4 ports USB-A type Device Interface)
- Wall-mount housing design with rack mountable bracket for easy and robust installation.
- Audio supports 7.1CH LPCM, DTS, Dolby, and analog LINE-IN/LINE-OUT.
- Automatic Display Mode Detection.
- Supports both of Interlaced and Progressive Display Modes.
- Supports DDC/DDC2B, Hot-Plug Detection (HPD) and HDCP 1.4 compliant.
- Supports Default EDID and EDID copy function for optimal PC-to-Screen performance.
- Bidirectional Infrared Remote (IR) signal and RS232 control communication (Transmitter &

Receiver).

- 7-segment LED display for video channel indication
- IR remote control for video channel setting
- **Supports PD/POE (option)**

Advanced features:

- i. Web UI shows the connection status included all of Transmitter (TX) and Receiver (RX).*
- ii. Connection switching control by operation of web-UI, push buttons or IR remote control.*
- iii. Visualize video wall configuration.*
- iv. Firmware upgraded by web-UI control.*
- v. The Receiver (RX) unit supports 2 video out, DVI-D video and DVI-I out synchronized.*
- vi. The Transmitter (TX) unit supports DVI-D-in and monitoring DVI-D-out synchronized.*
- vii. Redundant Flash ROM for F/W (firmware) recovery from the failed update.*
- viii. Remotely away operational KVM USB switching to selective PC/sources.*
- ix. Displaying mapping status on LED display shown for both of Transmitter(TX) & Receiver(RX).*

Package Contents

1. DVI Extender Transmitter (TX) x 1
2. DVI Extender Receiver (RX) x 1
3. **Lockable Power Supply DC 5V / 3A (TX & RX pair units) x 2**
4. IR cables (IR blaster cable x 1; IR receiver cable x 1)
5. USB 2.0 cable x 1
6. Audio/Mic cable x 1
7. Remote Control x 1
8. User Manual x 1

Specifications

DVI		Transmitter (TX)	Receiver (RX)
Console Connection	Video Output	■ DVI-D 24+1 pin , female x 1	■ DVI-D 24+1 pin , female x 1
			■ DVI-I 24+5 pin, female x 1
	Serial Control Port (RS-232)	D-SUB 9pin, female x 1, Baud Rate 115,200bps	D-SUB 9pin, male x 1, Baud Rate 115,200bps
Host Connection	Video Input	■ DVI-D 24+1 pin , female x 1	N/A
Extension Port	RJ-45	DVI Full HD Video Audio + IR + RS-232 + USB extension over IP	
Optic Fiber Link		1	
USB Interface	Host	USB Type B, female x 1	N/A
	Device	N/A	USB Type A, female x 4 ■ Keyboard x 1 ■ Mouse x 1 ■ Device x 2
Audio		2-way analog audio ■ Line IN x1 ■ Line Out x1	2-way analog audio ■ MIC IN x1 ■ Line Out x1
		Supports High Definition Audio (HD) 5.1/6.1/7.1 Surround Sound ■ Dolby Atmos® ■ DTS:X™ LPCM audio up to 7.1 channels 192kHz.	
Hardware Switch	Set / Reset	Push Button	
	Function Selection	Push Button	
	Video Channel	Push Button (CH+/CH-)	
Infrared Remote (IR)		Bi-directional, thru. 20~60KHz, Two way Pass-Thru.	
LED Indicators	Status Monitoring	■ Power : Blue LED ■ Link : Green LED	

	Function Selection	<input type="checkbox"/> EDID Copy : Green LED (use Local port)	<input type="checkbox"/> EDID Update : Green LED
		<input type="checkbox"/> SFP Status : Green LED	
		<input type="checkbox"/> Video Mode Selection (Video or graphic): Green LED	
		N/A	<input type="checkbox"/> USB Link (Up-Stream) : Green LED
DDC Supported	DDC, DDC2, DDC2B		
Extension Cable Type & Length	CAT.5e/CAT.6 Extending Distance : 330 ft (100m) Fiber Optic (SFP module) single-mode up to 30 Km		
Max. Video Resolution	1920x1200 60fps		
Wide Screen Supported	Yes		
OS Compatibility	OS Independent		
Power Supply	External DC 5V / 3A Power Supply		
Dimension (L x W x H)	7.34"(180mm) x 3.58"(98mm) x 1.25" (32mm)		
Weight	483 g	487 g	
Housing material	Chassis Metal		
Operating Temperature	32 ~ 122 °F (0 ~ 50 °C)		
Storage Temperature	-4 ~ 140 °F (-20 ~ 60 °C)		
Humidity	0% - 80% RH		

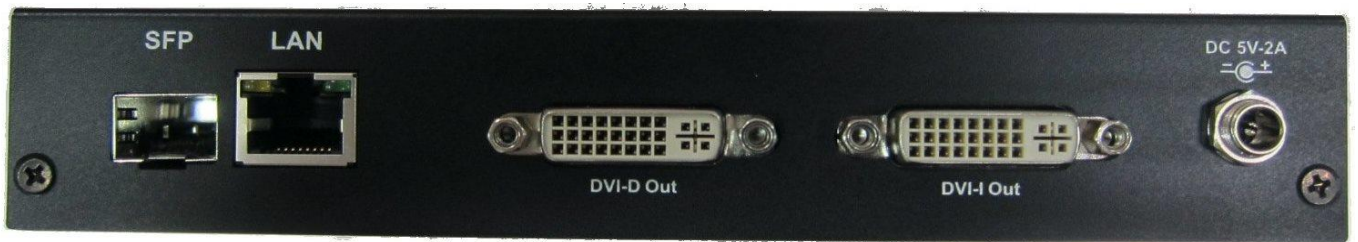
Panel Diagram

Transmitter (TX) :



Transmitter (rear side)

Receiver (RX) :



Receiver (rear side)

Functionalities features:



Link Mapping Indication



Receiver unit (RX) DVI-I



DC Power Locking Jack



USB Compatible 1.1 & 2.0



Fiber Optic

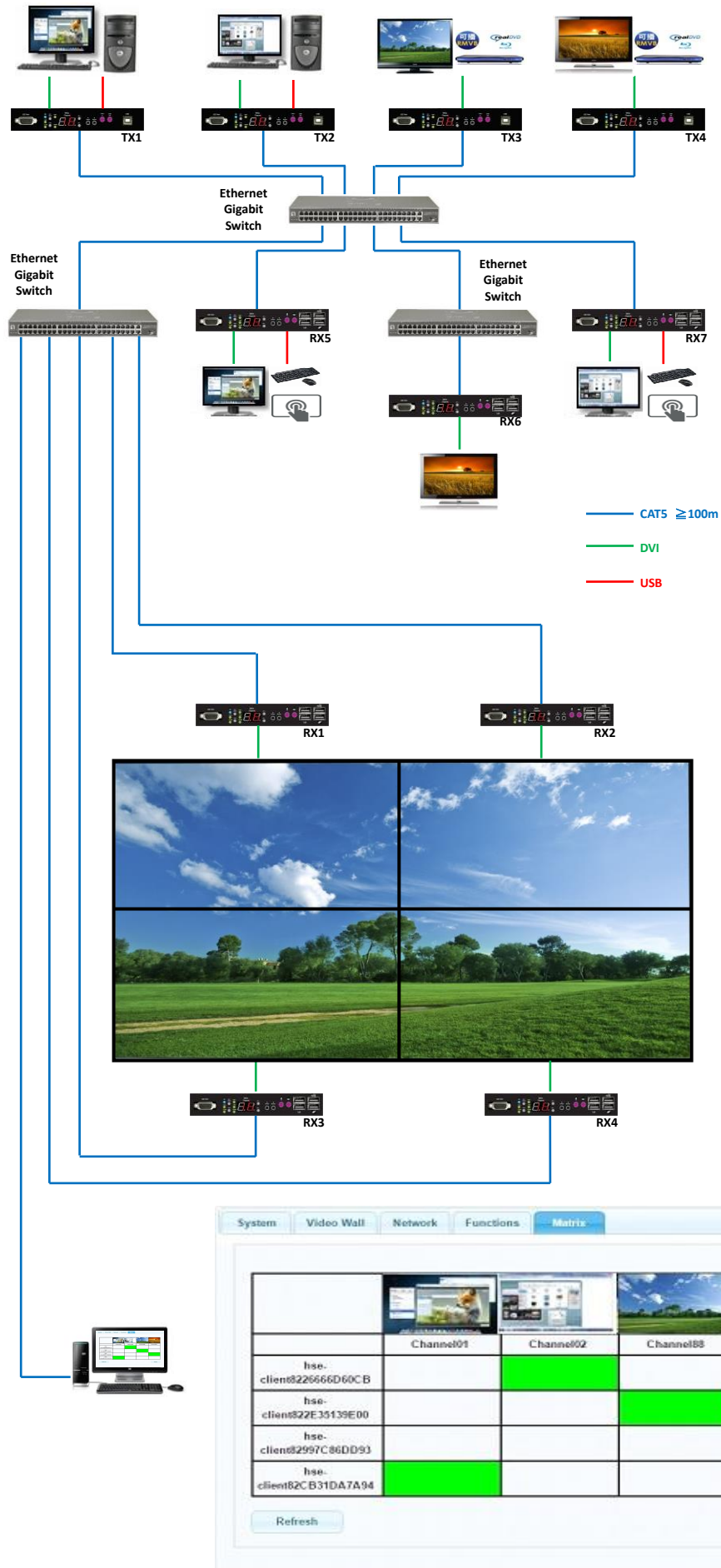
(Compatible for SFP module either single-mode or multi-mode alternative)



(Optional)



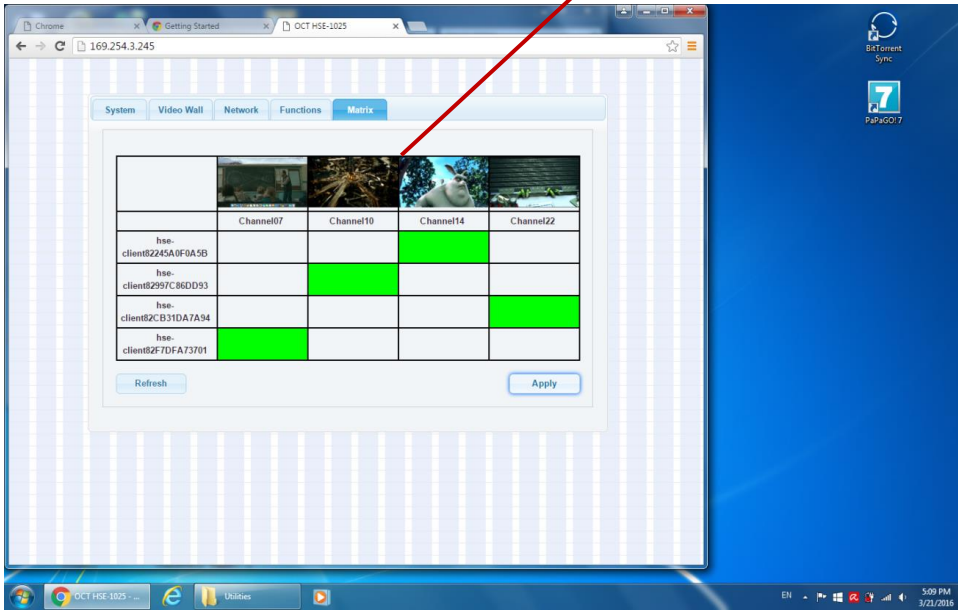
Application Diagram



Video Walls Matrix – easing visual and intuitive interface of user with mouse clicking on block.

Video Wall Matrix Settlement

Sources pictures Snap-shot being identified viewing



To use mouse clicking to complete the remote screens content allocated from sources away, and upper row displaying pictures snapping-shot being remarkable view.

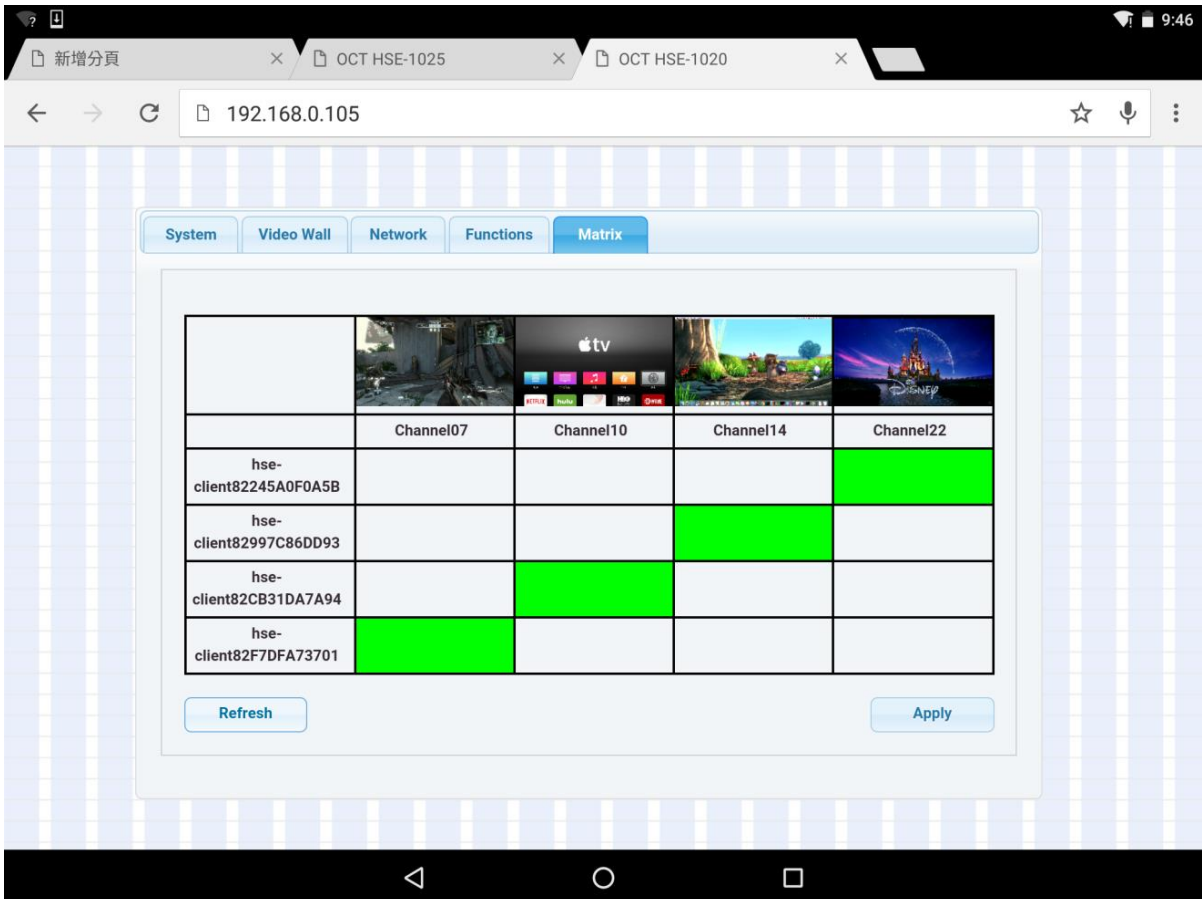
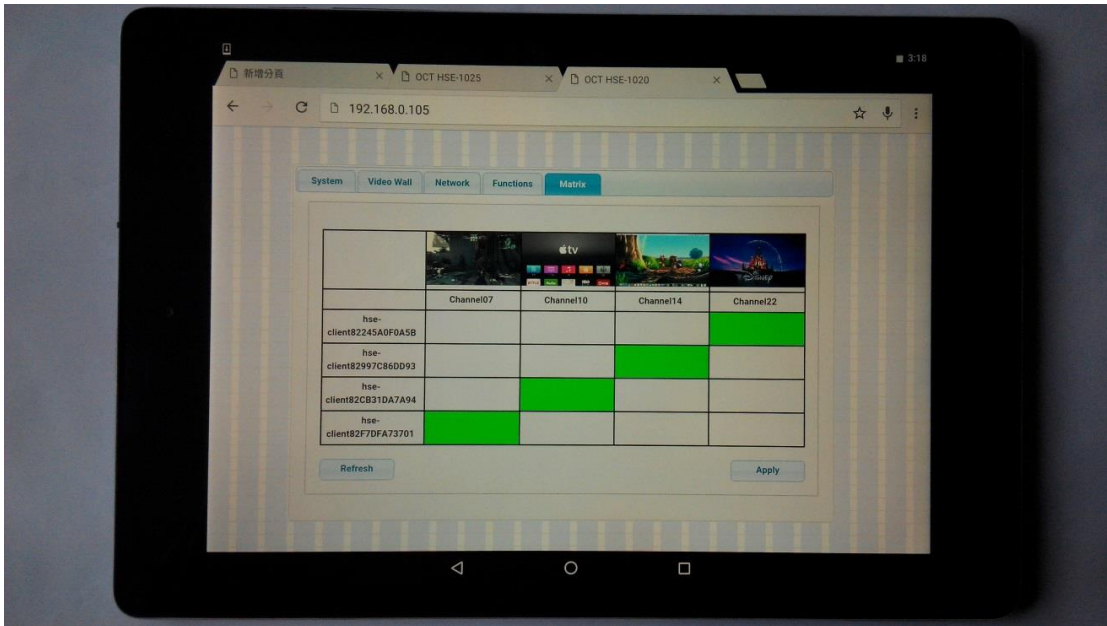


Table PC / Mobile Phone are both suitable for web-UL operation of video wall settlement.



Application Scenario

Sports Bar



Super Market



Plant Automation Control Room

